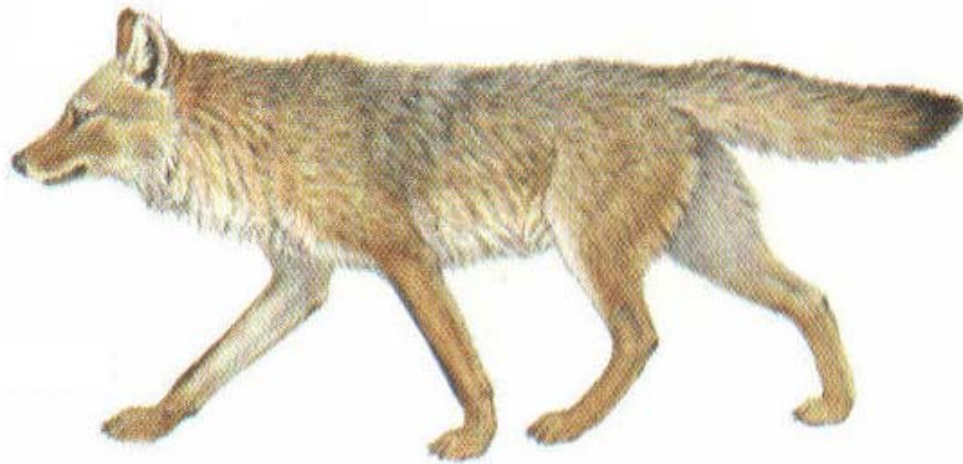


Population Analysis And Breeding/Transfer Plan

Red Wolf

Canis rufus gregoryi

Species Survival Plan[®]



Species Coordinator

Will Waddell, Point Defiance Zoo & Aquarium

5400 Pearl St, Tacoma, WA 98407-3218

Phone: (253) 858-9172

Email: wwaddell@pdza.org

REGIONAL STUDBOOK KEEPER

Will Waddell, Point Defiance Zoo & Aquarium

SPMAG ADVISOR

Randy Fulk, North Carolina Zoological Park

Sarah Long, AZA Population Management Center

25 July 2003

This report prepared with assistance from the

American Zoo and Aquarium Association Population Management Center In Chicago



Executive Summary 2003 - 2004

Breeding/Transfer Plan - Red Wolf SSP[®]

The captive population of red wolves consists of 162 animals at 37 participating institutions as of July 2003. The population has been growing steadily in captivity since the early 1970s, with a decline in numbers in recent years. The target population size set by the SSP and the Canid Taxon Advisory Group is 250.

Current gene diversity for the managed population is 90.3% and is equivalent to the genetic diversity of a population descended from approximately 8 founders (8.15 fge). When gene diversity falls below 90%, it is expected that reproduction will be increasingly compromised by, among other factors, lower birth weights, smaller litter sizes, and greater neonatal mortality. With a target size of 250 and a growth rate of 4%, gene diversity can be maintained at or above 85% for 25 years. To maintain a high level of gene diversity for a longer period of time, methods such as increasing the population growth rate and increasing the proportion of breeders in the population (effective population size) should be considered.

DEMOGRAPHY

	Current	Target
Current Population Size	162	250
Specimens Excluded from Genetic Analyses	22	
Number of Participating Institutions	37	
Mean Generation Time (years)	5.7	
Population Growth Rate	1.04	
Number of Transfers Within The SSP (Breeding/Space)	30+	
Number of Specimens to Import/Export	0	

GENETICS

	Current	Potential
Number of Founders	12	0
Founder Genome Equivalents (fge)	5.15	8.15
Current Gene Diversity (% of Wild)	90.3	94
Mean Inbreeding Coefficient	0.0565	
Years To 90% Gene Diversity	0	
Gene Diversity at 100 Years From Present (%)	74	

For the 2003/04 breeding season 30 breeding recommendations have been made in order to meet genetic and demographic goals. An additional 2-3 pairs could occur prior to next breeding season depending on available space. Four females were also identified to monitor for possible artificial insemination. Pairings are based on mean kinship, avoidance of inbreeding, avoidance of linking rare and common lineages, and logistical constraints identified by the participating institutions. Due to the age and low likelihood of success of many genetically valuable pairs, some younger pairs have been recommended not to meet genetic goals but to meet the demographic goal of maintaining the population size.

Although inbreeding should be avoided in order to maintain a healthy captive population, it has become increasingly difficult to avoid in this population since no additional founders exist. Higher levels of inbreeding will need to be tolerated in forming reproductive pairs and long term genetic goals will need to be set at lower than 90% gene diversity. The Red Wolf Recovery Plan (USFWS) sets target gene diversity to be retained at 80 – 85%. For the purposes of this plan, offspring inbreeding coefficients greater than the population mean kinship (0.0971) were avoided.

The SSP also recommends reproductive evaluations, in the form of year round fecal sampling, of all females that may be considered for breeding this season or in the near future. Further instructions and protocol will be provided by contacting Dr. Karen Goodrowe, Red Wolf SSP Reproduction Advisor, PDZA (253-404-3680 – kareng@tacomaparks.com).

Draft Summary of Breeding and Transfer Recommendations

ID	Location	Local ID	Sex	Age	Additional Info	Disposition	Location	Breeding	With	Notes
921	ALEXANDRI	M00090	F	6	00-0127-B2CC	HOLD	ALEXANDRI	BREED WITH	923	
923	ALEXANDRI	M00095	M	6	Resty 00-004F-7E10	HOLD	ALEXANDRI	BREED WITH	921	
551	ASHEBORO	1383	s	11		HOLD	ASHEBORO	DO NOT BREED		
441	ASHEBORO	1473	F	13		HOLD	ASHEBORO	DO NOT BREED		
482	ASHEBORO	1476	M	12		HOLD	ASHEBORO	DO NOT BREED		
550	ASHEBORO	1382	s	11		HOLD	ASHEBORO	DO NOT BREED		
471	ASHEBORO	1474	M	12		TRANSFER	BREVARD	BREED WITH	719	
842	ASHEBORO	1597	M	7		HOLD	ASHEBORO	BREED WITH	637	
983	ASHEVILLE	983	F	5	00-004F-016F	HOLD	ASHEVILLE	BREED WITH	1091	
432	ASHEVILLE	432	M	13		TRANSFER	ASHEBORO	DO NOT BREED		
521	AWENDA	10521	M	11		HOLD	AWENDA	DO NOT BREED		
723	AWENDA	10723	M	9		HOLD	AWENDA	DO NOT BREED		
549	AWENDA	10549	M	11	549 00-001F-03D7	HOLD	AWENDA	BREED WITH	579	
640	AWENDA	10640	M	10	00-0070-8A65	HOLD	AWENDA	BREED WITH	744	
647	AWENDA	10647	F	10	00-001F-0B95	HOLD	AWENDA	BREED WITH	724	
724	AWENDA	10724	M	9	00-0096-1657	HOLD	AWENDA	BREED WITH	647	
744	AWENDA	10744	F	9	00-0062-F8D9	HOLD	AWENDA	BREED WITH	640	
818	AWENDA	10818	F	7	00-001F-0ADF	TRANSFER	ASHEBORO	BREED WITH	1124	
958	BINGHAMTO	M02102	F	5	Libby	HOLD	BINGHAMTO	BREED WITH	1131	
1131	BINGHAMTO	211010	M	2		HOLD	BINGHAMTO	BREED WITH	958	
535	BLOOMINGT	M02031	F	11	00-000D-F471	HOLD	BLOOMINGT	DO NOT BREED		
1124	BREVARD	940712	M	2	046-776-278	TRANSFER	ASHEBORO	BREED WITH	818	
1125	BREVARD	940713	M	2	046-598-854	TRANSFER	ASHEBORO	DO NOT BREED		
571	BRIDGEPRT	101336	F	11	571 00-000D-024C	HOLD	BRIDGEPRT	BREED WITH	817	
817	BRIDGEPRT	101335	M	7	00-000D-7E64	HOLD	BRIDGEPRT	BREED WITH	571	
620	CHATT NAT	620	M	10	0000-0D-3DDE	HOLD	CHATT NAT	DO NOT BREED		
722	CHATT NAT	722	M	9	00-000D-2D05	HOLD	CHATT NAT	BREED WITH	690	
919	CHEHAW	M03009	F	6	00-01DC-1380	HOLD	CHEHAW	DO NOT BREED		

ID	Location	Local ID	Sex	Age	Additional Info	Disposition	Location	Breeding	With	Notes
1203	CHEHAW	MO3010	F	1	433A112072	HOLD	CHEHAW	DO NOT BREED		
1204	CHEHAW	M03011	F	1	433C2F1C3F	HOLD	CHEHAW	DO NOT BREED		
918	DURHAM MS	918	F	6	00-0142-4E6C	TRANSFER	MANTEO	DO NOT BREED		
1193	DURHAM MS	2M0202	M	1		HOLD	DURHAM MS	DO NOT BREED		
1194	DURHAM MS	3M0202	M	1		HOLD	DURHAM MS	DO NOT BREED		
579	FORTWORTH	200766	F	11	579 00-0014-6D10 00-000D-FB50	TRANSFER	AWENDA	BREED WITH	549	
956	FORTWORTH	201422	M	5		HOLD	FORTWORTH	BREED WITH	937	
513	FOSSILRIM	5028	M	11	513 00-001E-94CA	HOLD	FOSSILRIM	DO NOT BREED		
514	FOSSILRIM	5029	M	11	514 00-004E-0F05	HOLD	FOSSILRIM	DO NOT BREED		
692	FOSSILRIM	_____	F	9		HOLD	FOSSILRIM	BREED WITH	1122	
1200	GOLDENPND	1200	M	1	43304C0454	HOLD	GOLDENPND	DO NOT BREED		
1201	GOLDENPND	1201	M	1	4330343C22	HOLD	GOLDENPND	DO NOT BREED		
645	GREENBAY	990003	M	10	Rover 00-000C-FF77	HOLD	GREENBAY	DO NOT BREED		
646	GREENBAY	990004	F	10	Hopi 00-004D-9A3F	HOLD	GREENBAY	DO NOT BREED		
1128	JACKSON	200136	F	2	046-630-769	HOLD	JACKSON	DO NOT BREED		
1129	JACKSON	200137	F	2	046-600-324	HOLD	JACKSON	DO NOT BREED		
1130	JACKSON	200138	F	2	046-857-339	HOLD	JACKSON	DO NOT BREED		
557	JACKSONVL	801304	F	11	557 00-0014-32F5	HOLD	JACKSONVL	BREED WITH	1020	
1091	JACKSONVL	802347	M	3	00-01BB-C80E	TRANSFER	ASHEVILLE	BREED WITH	983	
622	KNOXVILLE	1568	F	10	0000-14-58EA	HOLD	KNOXVILLE	DO NOT BREED		
917	KNOXVILLE		s	6		HOLD	KNOXVILLE	DO NOT BREED		
469	LOWRY	100817	M	12	00-001E-4D58	HOLD	LOWRY	BREED WITH	793	
726	LOWRY	100722	F	9	00-0062-1F0A	HOLD	LOWRY	BREED WITH	974	
730	LOWRY	101760	F	9	00-0014-69BE	HOLD	LOWRY	DO NOT BREED		
793	LOWRY	100923	F	8	00-004F-7E2D	HOLD	LOWRY	BREED WITH	469	
974	LOWRY	101761	M	5		HOLD	LOWRY	BREED WITH	726	

ID	Location	Local ID	Sex	Age	Additional Info	Disposition	Location	Breeding	With	Notes
520	MANTEO	520	M	11	000-133-F558	HOLD	MANTEO	DO NOT BREED		
537	MANTEO	537	M	11	000-12A-5D5A	HOLD	MANTEO	DO NOT BREED		
719	MANTEO	719	F	9	00-0133-6B5D	TRANSFER	BREVARD	BREED WITH	471	
720	MANTEO	720	F	9	00-0134-17AE	TRANSFER	KNOXVILLE	BREED WITH	1117	
729	MANTEO	10729	M	9	00-000D-0BBC	HOLD	MANTEO	DO NOT BREED		
953	MANTEO	10953	M	5	00-0124-F8D0	TRANSFER	WHEELING	BREED WITH	1021	
1117	MANTEO	11117	M	2		TRANSFER	KNOXVILLE	BREED WITH	720	
743	MILL MOUN	482	F	9	00-0062-FBCF	HOLD	MILL MOUN	BREED WITH	816	
816	MILL MOUN	467	M	7	00-001E-F4FB	HOLD	MILL MOUN	BREED WITH	743	
406	NCS RAL		M	13		HOLD	NCS RAL	DO NOT BREED		
632	NCS RAL	10632	M	10	00-000D-EAE1	HOLD	NCS RAL	DO NOT BREED		
1195	OKLAHOMA	770118	F	1	8F2F	HOLD	OKLAHOMA	DO NOT BREED		
1196	OKLAHOMA	770119	F	1	7437	HOLD	OKLAHOMA	DO NOT BREED		
1197	OKLAHOMA	770120	F	1		HOLD	OKLAHOMA	DO NOT BREED		
624	PROVIDNCE	931051	F	10		HOLD	PROVIDNCE	BREED WITH	1097	
1097	PROVIDNCE	100119	M	3	00-011E-5B65	HOLD	PROVIDNCE	BREED WITH	624	
348	PROVIDNCE		s	15		HOLD	PROVIDNCE	DO NOT BREED		
1121	RACINE	M0133	M	2	00-061B-3464	TRANSFER	WCSRC	BREED WITH	819	
1122	RACINE	M0134	M	2	00-061B-3EAO	TRANSFER	FOSSILRIM	BREED WITH	692	
957	SIOUX FAL	2163	M	5		HOLD	SIOUX FAL	TBD		
419	SIOUX FAL		F	13		HOLD	SIOUX FAL	DO NOT BREED		
604	SPRINGFIE	761	F	10	00-004C-FCC4 604	HOLD	SPRINGFIE	BREED WITH	689	
689	SPRINGFIE	_____	M	9		HOLD	SPRINGFIE	BREED WITH	604	
387	SYRACUSE		M	14		HOLD	SYRACUSE	DO NOT BREED		
690	SYRACUSE	M01009	F	9		TRANSFER	CHATT NAT	BREED WITH	722	
409	TACOMA	0409	F	13		HOLD	TACOMA	DO NOT BREED		
439	TACOMA	0439	F	13		HOLD	TACOMA	DO NOT BREED		
436	TACOMA	0436	M	13		HOLD	TACOMA	DO NOT BREED		
543	TACOMA	0543	M	11		HOLD	TACOMA	DO NOT BREED		
568	TACOMA	0568	M	11		HOLD	TACOMA	DO NOT BREED		
574	TACOMA	0574	M	11		HOLD	TACOMA	DO NOT BREED		

ID	Location	Local ID	Sex	Age	Additional Info	Disposition	Location	Breeding	With	Notes
491	TACOMA	0491	M	12	Wg491 00-000D-E86E	HOLD	TACOMA	BREED WITH	925	
492	TACOMA	0492	M	12	Wg492 00-004D-6D44	HOLD	TACOMA	DO NOT BREED		
562	TACOMA	0562	F	11	00-004D-A136	HOLD	TACOMA	BREED WITH	652	
569	TACOMA	0569	M	11	569 00-001F-3FF1	HOLD	TACOMA	BREED WITH	603	
576	TACOMA	0576	F	11	576 00-0017-14C6	HOLD	TACOMA	BREED WITH	924	
603	TACOMA	0603	F	10	00-000D-8E0F 603	HOLD	TACOMA	BREED WITH	569	
648	TACOMA	0648	F	10	00-004D-037B	HOLD	TACOMA	BREED WITH	AI	
651	TACOMA	0651	M	10	00-000D-093D	HOLD	TACOMA	BREED WITH	1096	
652	TACOMA	0652	M	10	00-0015-92A4	HOLD	TACOMA	BREED WITH	562	
687	TACOMA	0687	M	9	00-001F-0838	HOLD	TACOMA	DO NOT BREED		
701	TACOMA	0701	M	9	00-000D-8B59	HOLD	TACOMA	DO NOT BREED		
702	TACOMA	0702	M	9	00-004C-FFFD	HOLD	TACOMA	DO NOT BREED		
703	TACOMA	0703	F	9	00-000D-132F	HOLD	TACOMA	DO NOT BREED		
704	TACOMA	0704	F	9	00-004C-FE36	HOLD	TACOMA	DO NOT BREED		
705	TACOMA	0705	F	9	00-0017-1995	HOLD	TACOMA	DO NOT BREED		
792	TACOMA	0792	F	8	00-0014-7448	HOLD	TACOMA	BREED WITH	939	
924	TACOMA	0924	M	6	Runner 00-0014-679A	HOLD	TACOMA	BREED WITH	576	
925	TACOMA	0925	F	6	Punkin 00-000D-7D75	HOLD	TACOMA	BREED WITH	491	
938	TACOMA	0938	F	6	00-0015-B022	HOLD	TACOMA	BREED WITH	AI	
939	TACOMA	0939	M	6	00-004E-F71B	HOLD	TACOMA	BREED WITH	792	
1009	TACOMA	01009	F	4		HOLD	TACOMA	DO NOT BREED		
1010	TACOMA	01010	F	4		HOLD	TACOMA	DO NOT BREED		
1095	TACOMA	01095	M	3	00-0114-251F	HOLD	TACOMA	DO NOT BREED		
1096	TACOMA	01096	F	3	00-01BB-C80E	HOLD	TACOMA	BREED WITH	651	
1098	TACOMA	01098	F	3	00-0065-0A63	HOLD	TACOMA	BREED WITH	AI	
1123	TACOMA	01123	F	2	00-061B-0FDA	HOLD	TACOMA	DO NOT BREED		

ID	Location	Local ID	Sex	Age	Additional Info	Disposition	Location	Breeding	With	Notes
1222	TACOMA	01222	M	1	00-0605-7D3C	HOLD	TACOMA	DO NOT BREED		
1223	TACOMA	01223	M	1		HOLD	TACOMA	DO NOT BREED		
1224	TACOMA	01224	F	1	00-0605-6EB0	TRANSFER	RACINE	DO NOT BREED		
1225	TACOMA	01225	F	1	00-01BB-9CCC	TRANSFER	RACINE	DO NOT BREED		
1226	TACOMA	01226	F	1	00-00F6-0E19	TRANSFER	WSC MN	BREED WITH	479	
1227	TACOMA	01227	F	1	00-0063-F611	HOLD	TACOMA	DO NOT BREED		
1228	TACOMA	01228	F	1	00-00F6-6063	HOLD	TACOMA	DO NOT BREED		
1277	TACOMA	01277	M	0		HOLD	TACOMA	DO NOT BREED		
1278	TACOMA	01278	M	0		HOLD	TACOMA	DO NOT BREED		
1279	TACOMA	01279	M	0		HOLD	TACOMA	DO NOT BREED		
1280	TACOMA	01280	F	0		HOLD	TACOMA	DO NOT BREED		
1281	TACOMA	01281	F	0		HOLD	TACOMA	DO NOT BREED		
1284	TACOMA	01284	M	0	61617114	HOLD	TACOMA	DO NOT BREED		
1285	TACOMA	01285	M	0		HOLD	TACOMA	DO NOT BREED		
1286	TACOMA	01286	M	0		HOLD	TACOMA	DO NOT BREED		
1287	TACOMA	01287	F	0		HOLD	TACOMA	DO NOT BREED		
477	TALLAHASE	03L003	M	12		HOLD	TALLAHASE	DO NOT BREED		
725	TALLAHASE	03L004	F	9	00-000C-FE5D	HOLD	TALLAHASE	DO NOT BREED		
932	TALLAHASE	01L008	M	6	00-0063-7C93	TRANSFER	TBD	DO NOT BREED		
1272	TALLAHASE	03L008	M	0		HOLD	TALLAHASE	DO NOT BREED		
1273	TALLAHASE	03L009	M	0		HOLD	TALLAHASE	DO NOT BREED		
1274	TALLAHASE	03L010	F	0		HOLD	TALLAHASE	DO NOT BREED		
1275	TALLAHASE	03L011	F	0		HOLD	TALLAHASE	DO NOT BREED		
1276	TALLAHASE	03L012	F	0		HOLD	TALLAHASE	DO NOT BREED		
494	TALLAHASE	94M001	F	12		HOLD	TALLAHASE	DO NOT BREED		
637	TREVOR	_____	F	10	00-000D-0821	TRANSFER	ASHEBORO	BREED WITH	842	
791	TREVOR	A3M623	M	8	00-004F-7DDF	HOLD	TREVOR	DO NOT BREED		
1291	TREVOR	A3M632	F	0		HOLD	TREVOR	DO NOT BREED		
1292	TREVOR	A3M633	M	0		HOLD	TREVOR	DO NOT BREED		

ID	Location	Local ID	Sex	Age	Additional Info	Disposition	Location	Breeding	With	Notes
1126	VA MUSEUM	_____	F	2		HOLD	VA MUSEUM	DO NOT BREED		
1127	VA MUSEUM	_____	F	2		HOLD	VA MUSEUM	DO NOT BREED		
559	VICTOR TX	960028	F	11	559 00-000D-503C	HOLD	VICTOR TX	BREED WITH	1092	
1092	VICTOR TX	200201	M	3	00-00F7-2A81	HOLD	VICTOR TX	BREED WITH	559	
619	WCSRC	200209	M	10	00-004D-A1A6	HOLD	WCSRC	DO NOT BREED		
621	WCSRC	200210	M	10	0000-17-183B	HOLD	WCSRC	DO NOT BREED		
740	WCSRC	200208	M	9		HOLD	WCSRC	DO NOT BREED		
819	WCSRC	20009	F	7	00-0017-1323	HOLD	WCSRC	BREED WITH	1121	
1020	WHEELING	3053	M	4		TRANSFER	JACKSONVL	BREED WITH	557	
1021	WHEELING	3052	F	4		HOLD	WHEELING	BREED WITH	953	
688	WOLFHAVEN	688	M	9		HOLD	WOLFHAVEN	DO NOT BREED		
515	WOLFHAVEN		F	11		HOLD	WOLFHAVEN	DO NOT BREED		
483	WSC MN		F	12		HOLD	WSC MN	DO NOT BREED		
479	WSC MN	479	M	12		HOLD	WSC MN	BREED WITH	1226	
511	WSC MN	511	M	11		HOLD	WSC MN	DO NOT BREED		
533	WSC MN	533	F	11	00-000D-F3BB	HOLD	WSC MN	DO NOT BREED		
534	WSC MN	534	F	11	00-004C-F9FF	HOLD	WSC MN	DO NOT BREED		
937	WSC MN	937	F	6	000-124-5A45	TRANSFER	FORTWORTH	BREED WITH	956	

NOTE: **RED TEXT** DENOTES CHANGES TO DRAFT RECOMMENDATIONS

ALEXANDRI

Alexandria Zoological Park
Alexandria, LA

Institutional Notes: Maintain current pair for breeding.

ID	Local ID	Sex	Age	Additional Info	Disposition	Location	Breeding	With	Notes
921	M00090	F	6	00-0127-B2CC	HOLD	ALEXANDRI	BREED WITH	923	
923	M00095	M	6	Resty 00-004F-7E10	HOLD	ALEXANDRI	BREED WITH	921	

Summary:

Before transfers: 1 male, 1 female
After transfers: 1 male, 1 female

ASHEBORO

North Carolina Zoo
Asheboro, NC

Institutional Notes:

Transfer: 471M to BREVARD

Receive: 637F from TREVOR to breed with 842M

818F from AWENDA (Sewee)

1124M (**1125M**) from BREVARD to breed with 818F from AWENDA

1125M (**1124M**) from BREVARD to pair with 551f

432M from ASHEVILLE to pair with 441F

ID	Local ID	Sex	Age	Additional Info	Disposition	Location	Breeding	With	Notes
441	1473	F	13		HOLD	ASHEBORO	PAIR WITH	432	
482	1476	M	12		HOLD	ASHEBORO	DO NOT BREED		
550	1382	s	11		HOLD	ASHEBORO	DO NOT BREED		
551	1383	s	11		HOLD	ASHEBORO	PAIR WITH	1125	
842	1597	M	7		HOLD	ASHEBORO	BREED WITH	637	
471	1474	M	12		TRANSFER	BREVARD	BREED WITH	719 (720)	

Summary:

Before transfers: 3 males, 1 females, 2 sterile
After transfers: 5 males, 3 females, 2 sterile

ASHEVILLE

Western NC Nature Center
Asheville, NC

Institutional Notes:

Transfer: 432M to ASHEBORO

Receive: 1091M from JACKSONVL

ID	Local ID	Sex	Age	Additional Info	Disposition	Location	Breeding	With	Notes
432		M	13		TRANSFER	ASHEBORO	PAIR WITH	441	
983	983	F	5	00-004F-016F	HOLD	ASHEVILLE	BREED WITH	1091	

Summary:

Before transfers: 1 male, 1 female
After transfers: 1 male, 1 female

AWENDA**Cape Romain Nat'l Wildlife Refuge**

Awenda, SC

Institutional Notes:

Receive: 579F from FORTWORTH

ID	Local ID	Sex	Age	Additional Info	Disposition	Location	Breeding	With	Notes
449	10449	F	12		HOLD	AWENDA	PAIR WITH	723	Breeding unlikely
549	10549	M	11	00-001F-03D7	HOLD	AWENDA	BREED WITH	579	
640	10640	M	10	00-0070-8A65	HOLD	AWENDA	BREED WITH	744	
647	10647	F	10	00-001F-0B95	HOLD	AWENDA	BREED WITH	724	
724	10724	M	9	00-0096-1657	HOLD	AWENDA	BREED WITH	647	
744	10744	F	9	00-0062-F8D9	HOLD	AWENDA	BREED WITH	640	
818	10818	F	7	00-001F-0ADF	TRANSFER	ASHEBORO	BREED WITH	1124 (1125)	
521	10521	M	11		HOLD	AWENDA	DO NOT BREED		
723	10723	M	9		HOLD	AWENDA	PAIR WITH	449	

Summary:

Before transfers: 5 males, 4 females

After transfers: 5 males, 4 females

BINGHAMTO**Ross Park Zoo**

Binghamton, NY

Institutional Notes: Maintain current pair for breeding.

ID	Local ID	Sex	Age	Additional Info	Disposition	Location	Breeding	With	Notes
958	M02102	F	5	Libby	HOLD	BINGHAMTO	BREED WITH	1131	
1131	211010	M	2		HOLD	BINGHAMTO	BREED WITH	958	

Summary:

Before transfers: 1 male, 1 female

After transfers: 1 male, 1 female

BLOOMINGT**Miller Park Zoo**

Bloomington, IL

Institutional Notes: Male recently euthanized for medical reasons. Placement of current female or receiving new wolves to be determined.

ID	Local ID	Sex	Age	Additional Info	Disposition	Location	Breeding	With	Notes
535	M02031	F	11	00-000D-F471	HOLD	BLOOMINGT	DO NOT BREED		

Summary:

Before transfers: 0 male, 1 female

After transfers: ? male, ? female

BREVARD

Brevard Zoo
Melbourne, FL

Institutional Notes:

Transfer: 1124M and 1125M to ASHEBORO

Receive: 471M from ASHEBORO to breed with 719F (720F) from MANTEO
719F (720F) from MANTEO to breed with 471M from ASHEBORO

ID	Local ID	Sex	Age	Additional Info	Disposition	Location	Breeding	With	Notes
1124	940712	M	2	046-776-278	TRANSFER	ASHEBORO	BREED WITH	818 (551)	
1125	940713	M	2	046-598-854	TRANSFER	ASHEBORO	PAIR WITH	551 (818)	

Summary:

Before transfers: 2 males, 0 females

After transfers: 1 males, 1 females

BRIDGEPRT

Beardsley Zoological Gardens
Bridgeport, CT

Institutional Notes: Maintain current pair for breeding.

ID	Local ID	Sex	Age	Additional Info	Disposition	Location	Breeding	With	Notes
571	101336	F	11	571 00-000D-024C	HOLD	BRIDGEPRT	BREED WITH	817	
817	101335	M	7	00-000D-7E64	HOLD	BRIDGEPRT	BREED WITH	571	

Summary:

Before transfers: 1 male, 1 female

After transfers: 1 male, 1 female

CHATT NAT

Chattanooga Nature Center
Chattanooga, TN

Institutional Notes:

Receive: 690F from SYRACUSE

ID	Local ID	Sex	Age	Additional Info	Disposition	Location	Breeding	With	Notes
620	620	M	10	0000-0D-3DDE	HOLD	CHATT NAT	DO NOT BREED		
722	722	M	9	00-000D-2D05	HOLD	CHATT NAT	BREED WITH	690	

Summary:

Before transfers: 2 males, 0 females

After transfers: 2 males, 1 females

CHEHAW

Chehaw Wild Animal Park
Albany, GA

Institutional Notes: Maintain current same sex group.

ID	Local ID	Sex	Age	Additional Info	Disposition	Location	Breeding	With	Notes
919	M03009	F	6	00-01DC-1380	HOLD	CHEHAW	DO NOT BREED		
1203	MO3010	F	1	433A112072	HOLD	CHEHAW	DO NOT BREED		
1204	M03011	F	1	433C2F1C3F	HOLD	CHEHAW	DO NOT BREED		

Summary:

Before transfers: 0 males, 3 females

After transfers: 0 males, 3 females

DURHAM MS

North Carolina Museum of Life and Science
Durham, NC

Institutional Notes:

Transfer: 918F to MANTEO prior to breeding season for temporary holding.

ID	Local ID	Sex	Age	Additional Info	Disposition	Location	Breeding	With	Notes
918	918	F	6	00-0142-4E6C	TRANSFER	MANTEO	DO NOT BREED		
1193	2M0202	M	1		HOLD	DURHAM MS	DO NOT BREED		
1194	3M0202	M	1		HOLD	DURHAM MS	DO NOT BREED		

Summary:

Before transfers: 2 males, 1 female

After transfers: 2 males, 0 female

FORTWORTH

Fort Worth Zoological Park
Ft Worth, TX

Institutional Notes:

Transfer: 579F to AWENDA

Receive: 937F from WSC MN

ID	Local ID	Sex	Age	Additional Info	Disposition	Location	Breeding	With	Notes
579	200766	F	11	00-000D-FB50	TRANSFER	AWENDA	BREED WITH	549	
956	201422	M	5		HOLD	FORTWORTH	BREED WITH	937	

Summary:

Before transfers: 1 male, 1 female

After transfers: 1 male, 1 female

FOSSILRIM

Fossil Rim Wildlife Center
Glen Rose, TX

Institutional Notes:

Receive: 1122M from RACINE

ID	Local ID	Sex	Age	Additional Info	Disposition	Location	Breeding	With	Notes
513	5028	M	11	513 00-001E-94CA	HOLD	FOSSILRIM	DO NOT BREED		
514	5029	M	11	514 00-004E-0F05	HOLD	FOSSILRIM	DO NOT BREED		
692	_____	F	9		HOLD	FOSSILRIM	BREED WITH	1122	

Summary:

Before transfers: 2 males, 1 female

After transfers: 3 males, 1 female

FRESNO

Chaffee Zool Gardens of Fresno
Fresno, CA

Institutional Notes: Red wolf enclosure undergoing renovation. (Received 687M & 1123F from Tacoma to breed)

ID	Local ID	Sex	Age	Additional Info	Disposition	Location	Breeding	With	Notes
----	----------	-----	-----	-----------------	-------------	----------	----------	------	-------

Summary:

Before transfers: 0 male, 0 females

After transfers: 0 male, 0 females

GOLDENPND

Land Between the Lakes

Golden Pond, KY

Institutional Notes: Maintain current same sex group. (One of males will be transferred to Knoxville to replace male from Manteo that died as result of Hurricane Isabel).

ID	Local ID	Sex	Age	Additional Info	Disposition	Location	Breeding	With	Notes
1200	1200	M	1	43304C0454	HOLD	GOLDENPND	DO NOT BREED		
1201	1201	M	1	4330343C22	HOLD	GOLDENPND	DO NOT BREED		

Summary:

Before transfers: 2 males, 0 females

After transfers: 2 males, 0 females

GREENBAY

Northeastern Wisconsin Zoo

Green Bay, WI

Institutional Notes: Maintain current pair and separate during breeding season. (646F to be transferred to Sioux Falls to pair with 957M for breeding. Replacement female to be determined).

ID	Local ID	Sex	Age	Additional Info	Disposition	Location	Breeding	With	Notes
645	990003	M	10	Rover 00-000C-FF77	HOLD	GREENBAY	DO NOT BREED		
646	990004	F	10	Hopi 00-004D-9A3F	HOLD	GREENBAY	DO NOT BREED		

Summary:

Before transfers: 1 male, 1 female

After transfers: 1 male, 1 female

JACKSON

Jackson Zoological Park

Jackson, MS

Institutional Notes: Maintain current same sex group. (One of females to be transferred to Awenda for release on Bulls Island with resident male).

ID	Local ID	Sex	Age	Additional Info	Disposition	Location	Breeding	With	Notes
1128	200136	F	2	046-630-769	HOLD	JACKSON	DO NOT BREED		
1129	200137	F	2	046-600-324	HOLD	JACKSON	DO NOT BREED		
1130	200138	F	2	046-857-339	HOLD	JACKSON	DO NOT BREED		

Summary:

Before transfers: 0 males, 3 females

After transfers: 0 males, 3 females

JACKSONVL

Jacksonville Zoological Gardens

Jacksonville, FL

Institutional Notes:

Transfer: 1091M to ASHEVILLE

Receive: 1020M from WHEELING

ID	Local ID	Sex	Age	Additional Info	Disposition	Location	Breeding	With	Notes
557	801304	F	11	557 00-0014-32F5	HOLD	JACKSONVL	BREED WITH	1020	
1091	802347	M	3	00-01BB-C80E	TRANSFER	ASHEVILLE	BREED WITH	983	

Summary:

Before transfers: 1 male, 1 female

After transfers: 1 male, 1 female

KNOXVILLE

Knoxville Zoological Gardens

Knoxville, TN

Institutional Notes:

Receive: 1117M from MANTEO and pair with 720F (719F) from MANTEO for breeding.

720F (719F) from MANTEO and pair with 1117M from MANTEO for breeding.

(1117M died as result of Hurricane Isabel. Replace with male from Golden Pond [LBL]).

ID	Local ID	Sex	Age	Additional Info	Disposition	Location	Breeding	With	Notes
622	1568	F	10	0000-14-58EA	HOLD	KNOXVILLE	DO NOT BREED		
917		s	6		HOLD	KNOXVILLE	DO NOT BREED		

Summary:

Before transfers: 0 males, 1 female, 1 sterile

After transfers: 1 males, 2 female, 1 sterile

LOWRY

Lowry Park Zoological Garden

Tampa, FL

Institutional Notes: Maintain current breeding pairs. Determine potential male to pair with 730F.

ID	Local ID	Sex	Age	Additional Info	Disposition	Location	Breeding	With	Notes
469	100817	M	12	00-001E-4D58	HOLD	LOWRY	BREED WITH	793	
726	100722	F	9	00-0062-1F0A	HOLD	LOWRY	BREED WITH	974	
730	101760	F	9	00-0014-69BE	HOLD	LOWRY	DO NOT BREED		
793	100923	F	8	00-004F-7E2D	HOLD	LOWRY	BREED WITH	469	
974	101761	M	5		HOLD	LOWRY	BREED WITH	726	

Summary:

Before transfers: 2 males, 3 females

After transfers: ? males, 3 females

MANTEO

Alligator River Nat'l Wildf Refuge

Manteo, NC

Institutional Notes:

Transfer: 719F (720F) to BREVARD
 720F (719F) to KNOXVILLE
 953M to WHEELING

1117M to KNOXVILLE (1117M died as result of Hurricane Isabel, replace with male from Golden Pond [LBL]).

Receive: 918F from DURHAM MS for temporary holding during breeding season.

ID	Local ID	Sex	Age	Additional Info	Disposition	Location	Breeding	With	Notes
520	10520	M	11	000-133-F558	HOLD	MANTEO	DO NOT BREED		Died as result of Hurricane Isabel
537	10537	M	11	000-12A-5D5A	HOLD	MANTEO	DO NOT BREED		
719 (720)	10719	F	9	00-0133-6B5D	TRANSFER	BREVARD	BREED WITH	471	
720 (719)	10720	F	9	00-0134-17AE	TRANSFER	KNOXVILLE	BREED WITH	1117	
729	10729	M	9	00-000D-0BBC	HOLD	MANTEO	DO NOT BREED		
953	10953	M	5	00-0124-F8D0	TRANSFER	WHEELING	BREED WITH	1021	
1117	11117	M	2		TRANSFER	KNOXVILLE	BREED WITH	720 (719)	Died as result of Hurricane Isabel

Summary:

Before transfers: 5 males, 2 females
 After transfers: 3 males, 1 females

MILL MOUN

Mill Mountain Zoo
 Roanoke, VA

Institutional notes: Maintain current pair for breeding.

ID	Local ID	Sex	Age	Additional Info	Disposition	Location	Breeding	With	Notes
743	482	F	9	00-0062-FBCF	HOLD	MILL MOUN	BREED WITH	816	
816	467	M	7	00-001E-F4FB	HOLD	MILL MOUN	BREED WITH	743	

Summary:

Before transfers: 1 males, 1 female
 After transfers: 1 males, 1 female

NCS RAL

North Carolina State Univ Dept Zool
 Raleigh, NC

Institutional notes: Maintain current wolves.

ID	Local ID	Sex	Age	Additional Info	Disposition	Location	Breeding	With	Notes
406	10406	M	13		HOLD	NCS RAL	DO NOT BREED		
632	10632	M	10	00-000D-EAE1	HOLD	NCS RAL	DO NOT BREED		

Summary:

Before transfers: 2 males, 0 females
 After transfers: 2 males, 0 females

OKLAHOMA

Oklahoma City Zoological Park
 Oklahoma City, OK

Institutional notes: Maintain current same sex group.

ID	Local ID	Sex	Age	Additional Info	Disposition	Location	Breeding	With	Notes
1195	770118	F	1	8F2F	HOLD	OKLAHOMA	DO NOT BREED		
1196	770119	F	1	7437	HOLD	OKLAHOMA	DO NOT BREED		
1197	770120	F	1		HOLD	OKLAHOMA	DO NOT BREED		

Summary:

Before transfers: 0 males, 3 females

After transfers: 0 males, 3 females

PROVIDNCE

Roger Williams Park Zoo
Providence, RI

Institutional notes: Maintain sterile female and current breeding pair.

ID	Local ID	Sex	Age	Additional Info	Disposition	Location	Breeding	With	Notes
348	911002	s	15		HOLD	PROVIDNCE	DO NOT BREED		
624	931051	F	10		HOLD	PROVIDNCE	BREED WITH	1097	
1097	100119	M	3	00-011E-5B65	HOLD	PROVIDNCE	BREED WITH	624	

Summary:

Before transfers: 1 male, 1 female, 1 sterile

After transfers: 1 male, 1 female, 1 sterile

RACINE

Racine Zoological Garden
Racine, WI

Institutional notes:

Transfer: 1121M or 1122M to WCSRC
1121M or 1122M to FOSSILRIM

Receive: 1224F and 1225F from TACOMA (Facility considering ending participation in RWSSP, transfer pending)

ID	Local ID	Sex	Age	Additional Info	Disposition	Location	Breeding	With	Notes
1121	M0133	M	2	00-061B-3464	TRANSFER	WCSRC	BREED WITH	819	
1122	M0134	M	2	00-061B-3EAO	TRANSFER	FOSSILRIM	BREED WITH	692	

Summary:

Before transfers: 2 males, 0 females

After transfers: 0 male, 2 females

SIOUX FAL

Great Plains Zoo
Sioux Falls, SD

Institutional notes: Determine female for pairing with 957M. (Receive 646F from Green Bay to pair with 957M)

ID	Local ID	Sex	Age	Additional Info	Disposition	Location	Breeding	With	Notes
957	2163	M	5		HOLD	SIOUX FAL	TBD (646)		

Summary:

Before transfers: 1 male, 0 female

After transfers: 1 male, ? female

SPRINGFIE

Henson Robinson Zoo
Springfield, IL

Institutional notes: Maintain current pair for breeding.

ID	Local ID	Sex	Age	Additional Info	Disposition	Location	Breeding	With	Notes
----	----------	-----	-----	-----------------	-------------	----------	----------	------	-------

604	761	F	10	00-004C-FCC4	604	HOLD	SPRINGFIE	BREED WITH	689
689	_____	M	9			HOLD	SPRINGFIE	BREED WITH	604

Summary:

Before transfers: 1 male, 1 female

After transfers: 1 male, 1 female

SYRACUSE

Rosamond Gifford Zoo (Burnet Park Zoo)

Syracuse, NY

Institutional notes: Red wolf enclosure to undergo renovation. Maintain current male.

Transfer: 690F to CHATT NAT

ID	Local ID	Sex	Age	Additional Info	Disposition	Location	Breeding	With	Notes
387		M	14		HOLD	SYRACUSE	DO NOT BREED		
690	M01009	F	9		TRANSFER	CHATT NAT	BREED WITH	722	

Summary:

Before transfers: 1 male, 1 female

After transfers: 1 male, 0 female

TACOMA

Point Defiance Zoo & Aquarium

Tacoma, WA

Institutional notes:

Transfer: 1224F and 1226F to RACINE (Facility considering ending participation in RWSSP, transfer pending)
1225F to WSC MN

ID	Local ID	Sex	Age	Additional Info	Disposition	Location	Breeding	With	Notes
409	0409	F	13		HOLD	TACOMA	DO NOT BREED		
436	0436	M	13		HOLD	TACOMA	DO NOT BREED		
439	0439	F	13		HOLD	TACOMA	DO NOT BREED		
491	0491	M	12	00-000D-E86E	HOLD	TACOMA	BREED WITH	925	
492	0492	M	12	00-004D-6D44	HOLD	TACOMA	DO NOT BREED		
543	0543	M	11		HOLD	TACOMA	DO NOT BREED		
562	0562	F	11	00-004D-A136	HOLD	TACOMA	BREED WITH	652	
568	0568	M	11		HOLD	TACOMA	DO NOT BREED		
569	0569	M	11	00-001F-3FF1	HOLD	TACOMA	BREED WITH	603	
574	0574	M	11		HOLD	TACOMA	DO NOT BREED		
576	0576	F	11	00-0017-14C6	HOLD	TACOMA	BREED WITH	924	
603	0603	F	10	00-000D-8E0F	HOLD	TACOMA	BREED WITH	569	
648	0648	F	10	00-004D-037B	HOLD	TACOMA	BREED WITH	AI	
651	0651	M	10	00-000D-093D	HOLD	TACOMA	BREED WITH	1096	
652	0652	M	10	00-0015-92A4	HOLD	TACOMA	BREED WITH	562	
687	0687	M	9	00-001F-0838	TRANSFER	FRESNO	BREED WITH	1123	
701	0701	M	9	00-000D-8B59	HOLD	TACOMA	DO NOT BREED		
702	0702	M	9	00-004C-FFFD	HOLD	TACOMA	DO NOT BREED		
703	0703	F	9	00-000D-132F	HOLD	TACOMA	DO NOT BREED		
704	0704	F	9	00-004C-FE36	HOLD	TACOMA	DO NOT BREED		
705	0705	F	9	00-0017-1995	HOLD	TACOMA	DO NOT BREED		
792	0792	F	8	00-0014-7448	HOLD	TACOMA	BREED WITH	939	
924	0924	M	6	00-0014-679A	HOLD	TACOMA	BREED WITH	576	
925	0925	F	6	00-000D-7D75	HOLD	TACOMA	BREED WITH	491	
938	0938	F	6	00-0015-B022	HOLD	TACOMA	DO NOT BREED		
939	0939	M	6	00-004E-F71B	HOLD	TACOMA	BREED WITH	792	
1009	01009	F	4		HOLD	TACOMA	DO NOT BREED		
1010	01010	F	4		HOLD	TACOMA	DO NOT BREED		
1095	01095	M	3	00-0114-251F	HOLD	TACOMA	DO NOT BREED		
1096	01096	F	3	00-01BB-C80E	HOLD	TACOMA	BREED WITH	651	

1098	01098	F	3	00-0065-0A63	HOLD	TACOMA	BREED WITH	AI	
1123	01123	F	2	00-061B-0FDA	TRANSFER	FRESNO	BREED WITH	687	
1222	01223	m	1		HOLD	TACOMA	DO NOT BREED		
1224	01224	F	1	00-0605-6EB0	TRANSFER	RACINE	DO NOT BREED		Pending
1225	01225	F	1	00-01BB-9CCC	TRANSFER	WSC MN	BREED WITH	479	
1226	01226	F	1	00-00F6-0E19	TRANSFER	RACINE	DO NOT BREED		Pending
1227	01227	F	1	00-0063-F611	HOLD	TACOMA	DO NOT BREED		
1228	01228	F	1	00-00F6-6063	HOLD	TACOMA	DO NOT BREED		
1277	01277	M	0		HOLD	TACOMA	DO NOT BREED		
1278	01278	M	0		HOLD	TACOMA	DO NOT BREED		
1279	01279	M	0		HOLD	TACOMA	DO NOT BREED		
1280	01280	F	0		HOLD	TACOMA	DO NOT BREED		
1281	01281	F	0		HOLD	TACOMA	DO NOT BREED		
1284	01284	M	0		HOLD	TACOMA	DO NOT BREED		
1285	01285	M	0		HOLD	TACOMA	DO NOT BREED		
1286	01286	M	0		HOLD	TACOMA	DO NOT BREED		
1287	01287	F	0		HOLD	TACOMA	DO NOT BREED		

Summary:

Before transfers: 22 males, 25 females

After transfers: 22 males, 22 females

TALLAHASE

Tallahassee Museum of History & Natural Sc
Tallahassee, FL

Institutional notes:

Transfer: 932M for breeding season to location TBD.

ID	Local ID	Sex	Age	Additional Info	Disposition	Location	Breeding	With	Notes
477	03L003	M	12		HOLD	TALLAHASE	DO NOT BREED		
494	94M001	F	12		HOLD	TALLAHASE	DO NOT BREED		
725	03L004	F	9	00-000C-FE5D	HOLD	TALLAHASE	DO NOT BREED		
932	01L008	M	6	00-0063-7C93	TRANSFER	TBD	DO NOT BREED		
1272	03L008	M	0		HOLD	TALLAHASE	DO NOT BREED		
1273	03L009	M	0		HOLD	TALLAHASE	DO NOT BREED		
1274	03L010	F	0		HOLD	TALLAHASE	DO NOT BREED		
1275	03L011	F	0		HOLD	TALLAHASE	DO NOT BREED		
1276	03L012	F	0		HOLD	TALLAHASE	DO NOT BREED		

Summary:

Before transfers: 4 males, 5 females

After transfers: 3 males, 5 females

TREVOR

Trevor Zoo
Millbrook, NY

Institutional notes:

Transfer: 637F to Asheboro

ID	Local ID	Sex	Age	Additional Info	Disposition	Location	Breeding	With	Notes
637	_____	F	10	00-000D-0821	TRANSFER	ASHEBORO	BREED WITH	842	

791	A3M623	M	8	00-004F-7DDF	HOLD	TREVOR	DO NOT BREED
1291	A3M632	F	0		HOLD	TREVOR	DO NOT BREED
1292	A3M633	m	0		HOLD	TREVOR	DO NOT BREED

cryptorchid

Summary:

Before transfers: 2 males, 2 females

After transfers: 2 males, 1 female

VA MUSEUM

Virginia Living Museum

Newport News, VA

Institutional notes: Maintain current same sex group.

ID	Local ID	Sex	Age	Additional Info	Disposition	Location	Breeding	With	Notes
1126	_____	F	2		HOLD	VA MUSEUM	DO NOT BREED		
1127	_____	F	2		HOLD	VA MUSEUM	DO NOT BREED		

Summary:

Before transfers: 0 males, 2 females

After transfers: 0 males, 2 females

VICTOR TX

Texas Zoo

Victoria, TX

Institutional notes: Maintain current pair for breeding.

ID	Local ID	Sex	Age	Additional Info	Disposition	Location	Breeding	With	Notes
559	960028	F	11	559 00-000D-503C	HOLD	VICTOR TX	BREED WITH	1092	
1092	200201	M	3	00-00F7-2A81	HOLD	VICTOR TX	BREED WITH	559	

Summary:

Before transfers: 1 male, 1 female

After transfers: 1 male, 1 female

WCSRC

Wild Canid Survival & Res Center

Eureka, MO

Institutional notes:

Receive: 1121M from RACINE

ID	Local ID	Sex	Age	Additional Info	Disposition	Location	Breeding	With	Notes
619	200209	M	10	00-004D-A1A6	HOLD	WCSRC	DO NOT BREED		
621	200210	M	10	0000-17-183B	HOLD	WCSRC	DO NOT BREED		

740	200208	M	9		HOLD	WCSRC	DO NOT BREED		
819	20009	F	7	00-0017-1323	HOLD	WCSRC	BREED WITH	1121	

Summary:

Before transfers: 3 males, 1 female

After transfers: 4 males, 1 female

WHEELING

Oglebay's Good Children's Zoo

Wheeling, WV

Institutional notes:

Transfer: 1020M to JACKSONVL

Receive: 953M from MANTEO

ID	Local ID	Sex	Age	Additional Info	Disposition	Location	Breeding	With	Notes
1020	3053	M	4		TRANSFER	JACKSONVL	BREED WITH	557	
1021	3052	F	4		HOLD	WHEELING	BREED WITH	953	

Summary:

Before transfers: 1 male, 1 female

After transfers: 1 male, 1 female

WOLFHAVEN

Wolf Haven International

Tenino, WA

Institutional notes: Maintain current pair. Breeding unlikely.

ID	Local ID	Sex	Age	Additional Info	Disposition	Location	Breeding	With	Notes
515	515	F	11		HOLD	WOLFHAVEN	DO NOT BREED		
688	688	M	9		HOLD	WOLFHAVEN	DO NOT BREED		

Summary:

Before transfers: 1 male, 1 female

After transfers: 1 male, 1 female

WSC MN

Wildlife Science Center

Forest Lake, MN

Institutional notes:

Transfer: 937F to FORTWORTH

Receive: 1225F from TACOMA

ID	Local ID	Sex	Age	Additional Info	Disposition	Location	Breeding	With	Notes
479	479	M	12		HOLD	WSC MN	BREED WITH	1225	
483	483	F	12		HOLD	WSC MN	PAIR WITH	511	

533	533	F	11	00-000D-F3BB	HOLD	WSC MN	DO NOT BREED	
534	534	F	11	00-004C-F9FF	HOLD	WSC MN	DO NOT BREED	
511	511	M	11		HOLD	WSC MN	PAIR WITH	483
937	937	F	6	000-124-5A45	TRANSFER	FORTWORTH	BREED WITH	956

Summary:

Before transfers: 2 males, 4 females

After transfers: 2 males, 4 females

